

Student Satisfaction Survey (SSS)

Instructions to fill the questionnaire:

- All questions should be compulsorily attempted.
- Each question has five responses, choose the most appropriate one.
- The response to the qualitative question no. 22 is student's opportunity to give suggestions or improvements; she/he can also mention weaknesses of the institute here. (Kindly restrict your response to teaching learning process only)

A). Age:

B). Name of the Department:

C). Gender: (i) Female (ii) Male (iii) Transgender

1.) What degree program are you pursuing now?

- a) ~~Bachelor's~~
- b) Master's
- c) MPhil
- d) Doctorate
- e) Other ()

2.) What subject area are you currently pursuing?

- a) Arts
- b) Commerce
- c) ~~Science~~
- d) Professional
- e) Other ()

3. How much of the syllabus was covered in the class?

- ~~4~~ - 85 to 100%
- 3 - 70 to 84%
- 2 - 55 to 69%
- 1 - 30 to 54%
- 0 - Below 30%

4. How well did the teachers prepare for the classes?

- 4 - Thoroughly
- 3 - Satisfactorily
- ~~2~~ - Poorly
- 1 - Indifferently
- 0 - Won't teach at all

5. How well were the teachers able to communicate?

- 4 – Always effective
- 3 – Sometimes effective
- 2 – Just satisfactorily
- 1 – Generally ineffective
- 0 – Very poor communication

6. The teacher's approach to teaching can best be described as

- 4 – Excellent
- 3 – Very good
- 2 – Good
- 1 – Fair
- 0 – Poor

5. Fairness of the internal evaluation process by the teachers.

- 4 – Always fair
- 3 – Usually fair
- 2 – Sometimes unfair
- 1 – Usually unfair
- 0 – Unfair

7. Was your performance in assignments discussed with you?

- 4 – Every time
- 3 – Usually
- 2 – Occasionally/Sometimes
- 1 – Rarely
- 0 – Never

8. The University takes active interest in promoting internship, student exchange, field visit opportunities for students.

- 4 – Regularly
- 3 – Often
- 2 – Sometimes
- 1 – Rarely
- 0 – Never

9. The teaching and mentoring process in your University facilitates you in cognitive, social and emotional growth.

- 4 – Significantly
- 3 – Very well
- 2 – Moderately
- 1 – Marginally
- 0 – Not at all

10. The University provides multiple opportunities to learn and grow.

- 4 – Strongly agree
- 3 – Agree
- 2 – Neutral

- 1 – Disagree
- 0 – Strongly disagree

11. Teachers inform you about your expected competencies, course outcomes and programme outcomes.

- 4 – Every time
- 3 – Usually
- 2 – Occasionally/Sometimes
- 1 – Rarely
- 0 – Never

12. Your mentor does a necessary follow-up with an assigned task to you.

- 4 – Every time
- 3 – Usually
- 2 – Occasionally/Sometimes
- 1 – Rarely
- 0 – I don't have a mentor

13. The teachers illustrate the concepts through examples and applications.

- 4 – Every time
- 3 – Usually
- 2 – Occasionally/Sometimes
- 1 – Rarely
- 0 – Never

14. The teachers identify your strengths and encourage you with providing right level of challenges.

- 4 – Fully
- 3 – Reasonably
- 2 – Partially
- 1 – Slightly
- 0 – Unable to

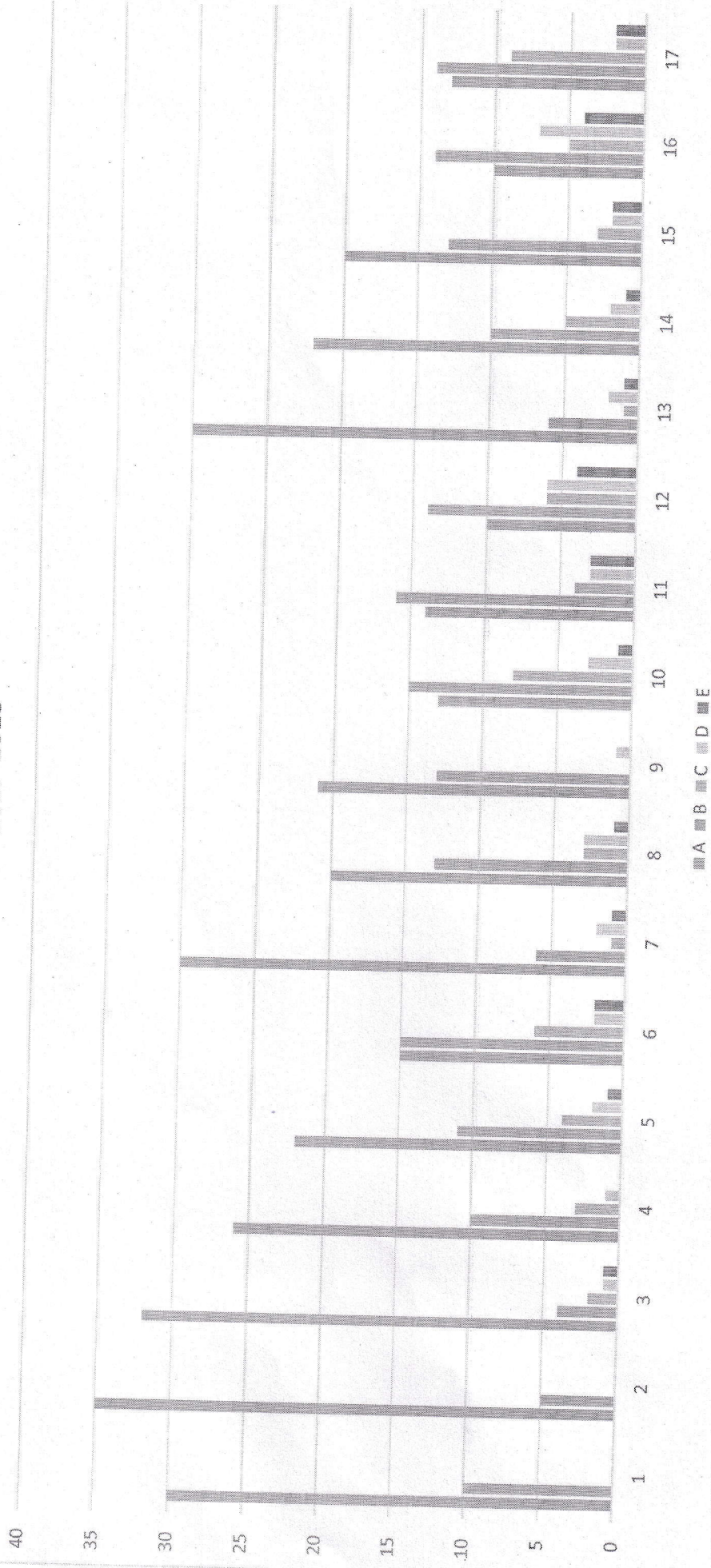
15. Teachers are able to identify your weaknesses and help you to overcome them.

- 4 – Every time
- 3 – Usually
- 2 – Occasionally/Sometimes
- 1 – Rarely
- 0 – Never

16. The University makes effort to engage students in the monitoring, review and continuous quality improvement of the teaching learning process.

- 4 – Strongly agree
- 3 – Agree
- 2 – Neutral
- 1 – Disagree
- 0 – Strongly disagree

2017-2018



Report 2017-18

More than 75% of students got satisfied with the coverage of syllabus with 85% to 100%. 71% of students appreciated the teachers' preparation for the classes with the remark 'Thoroughly' and the communication with the remark 'Always Effective'. Most of the students admired the regularity of classes. The evaluation of internal assessment examination and transparency in the system has been well applauded by majority of the students. Most students got satisfied with the practical examples and applications mentioned by the teacher while explaining the concepts.

The efforts are made by the teachers of Royal Educational Institute to develop critical thinking and inculcate valuable skills to prepare the students for future prospects. These efforts are strongly appreciated by the students. The teaching and learning process in the institute with the implementation of modern and distinctive pedagogical methods could gain the satisfaction levels upto excellent from more than 80% of students.

Maximum number of students strongly agree that the quality of teaching-learning process in the institute is very good.